

1A March

$\text{♩} = 110-120$

PART 1

C Flute/Mallets/
C Clarinet

B \flat Clarinet/Cornet 1

E \flat Alto Sax 1

PART 2

B \flat Clarinet/Cornet 2

E \flat Alto Sax 2/Horn 1

F Horn 1

PART 3

B \flat Clarinet 3

E \flat Alto Sax 3/Horn 2

B \flat Tenor Sax/Trb.
Bar 1

F Horn 2

C Trombone/
Baritone 1

PART 4

C Trombone/
Baritone 2,
String Bass

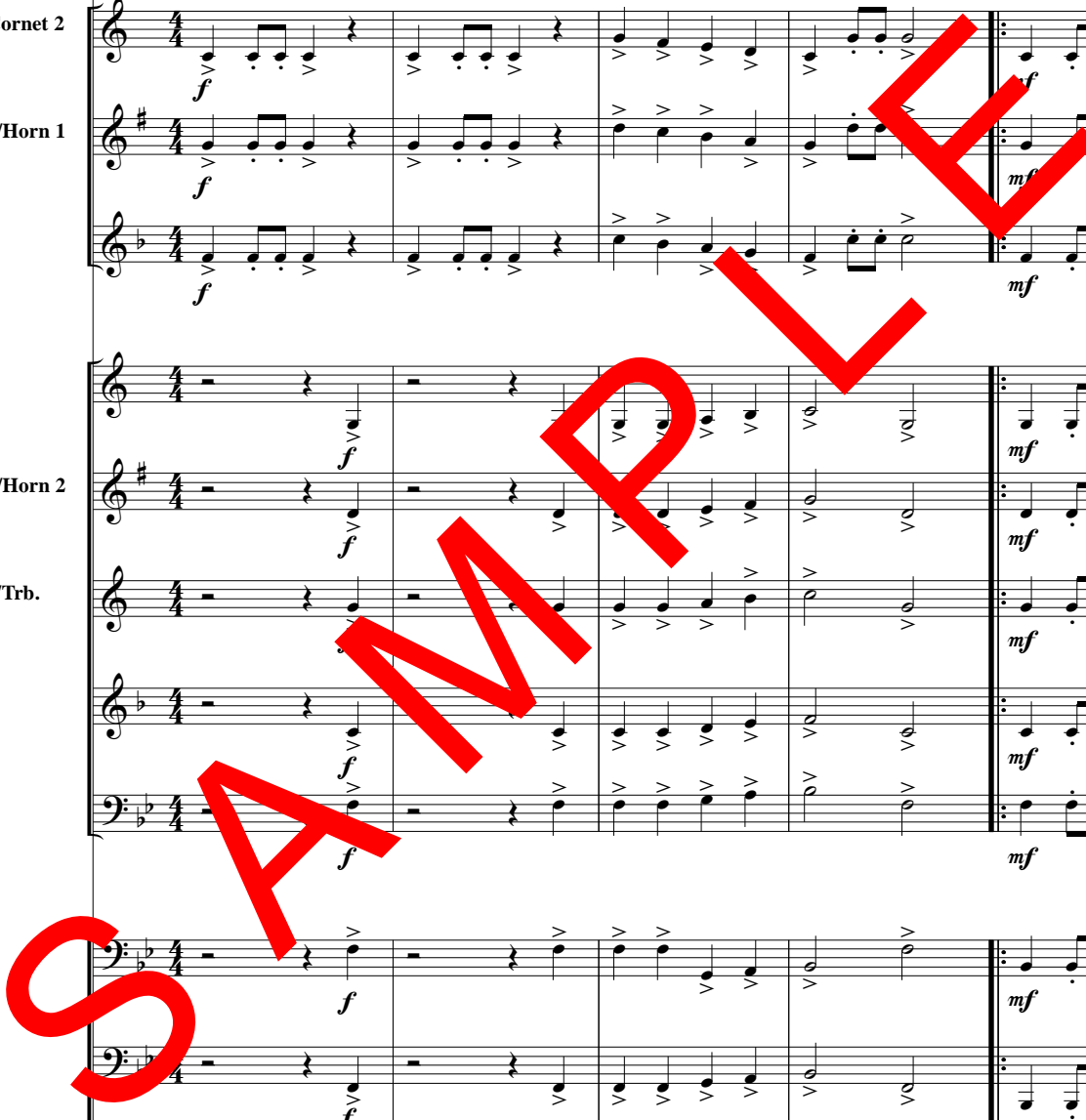
C Basses

E \flat Baritone Sax/
E \flat Bass

B \flat Bass Clarinet/
B \flat Trb, Bar, Bass

Snare Drum
Bass Drum

Cym A2



PART 1

C Fl/Mal/
C Cl

B \flat Cl/Cnt 1

E \flat Alto Sax 1

PART 2

B \flat Cl/Cnt 2

E \flat Asx 2/
Hn 1

F Horn 1

PART 3

B \flat Clarinet 3

E \flat Asx 3/
Hn 2

B \flat Tsx/
Trb, Bar 1

F Horn 2

C Trb/Bar 1

PART 4

C Trb/Bar 2
Str B

C Basses

E \flat Bsx/Bs

B \flat Bcl/Trb,
Bar, B \flat Bs

S.D.
B.D.

A2

SAMPLE

f

PART 1

C Fl/Mal./
C Cl

B \flat Cl/Cnt 1

E \flat Alto Sax 1

ff

PART 2

B \flat Cl/Cnt 2

E \flat Asx 2/
Hn 1

F Horn 1

ff

PART 3

B \flat Clarinet 3

E \flat Asx 3/
Hn 2

B \flat Tsx/
Trb, Bar 1

F Horn 2

C Trb/Bar 1

ff

PART 4

C Trb/Bar 2
Str B

C Basses

E \flat Bsx/Bs

B \flat Bcl/Trb,
Bar, B \flat Bs

S.D.
B.D.

A2

ff



PART 1

C Fl/Mal./
C Cl

B \flat Cl/Cnt 1

E \flat Alto Sax 1

PART 2

B \flat Cl/Cnt 2

E \flat Asx 2/
Hn 1

F Horn 1

PART 3

B \flat Clarinet 3

E \flat Asx 3/
Hn 2

B \flat Tsx/
Trb, Bar 1

F Horn 2

C Trb/Bar 1

PART 4

C Trb/Bar 2
Str B

C Basses

E \flat Bsx/Bs

B \flat Bcl/Trb,
Bar, B \flat Bs

S.D.
B.D.

A2

PART 1
C Fl/Mal./
C Cl
B \flat Cl/Cnt 1
Eb Alto Sax 1

PART 2
B \flat Cl/Cnt 2
Eb Asx 2/
Hn 1
F Horn 1

PART 3
B \flat Clarinet 3
Eb Asx 3/
Hn 2
B \flat Tsx/
Trb, Bar 1
F Horn 2
C Trb/Bar 1

PART 4
C Trb/Bar 2
Str B
C Bases
Eb Bsx/Bs
B \flat Bcl/Trb,
Bar, B \flat Bs
S.D.
B.D.
A2

PART 1 25

C Fl/Mal./
C Cl

B \flat Cl/Cnt 1

E \flat Alto Sax 1

PART 2

B \flat Cl/Cnt 2

E \flat Asx 2/
Hn 1

F Horn 1

PART 3

B \flat Clarinet 3

E \flat Asx 3/
Hn 2

B \flat Tsx/
Trb, Bar 1

F Horn 2

C Trb/Bar 1

PART 4

C Trb/Bar 2
Str B

C Basses

E \flat Bsx/Bs

B \flat Bcl/Trb,
Bar, B \flat Bs

S.D.
B.D.

A2